



CM Manual hoists

Lever operated hoists

Short handle puller	24
Puller.....	25-26
Rigger.....	27
Series 637.....	27
Wire rope puller.....	28

Hand operated hoists

Cyclone.....	29-32
Army type.....	33-34
Low headroom	35-36
Chain containers/bags.....	37-38
Series 622	39-40

Chain charts.....	41-42
-------------------	-------

1 CM Short handle puller

- Easy one-hand operation
- Lever pull range is 45 to 62 pounds to lift full load
- Handle that rotates 360°, making it easy to operate in any position and in small spaces
- Tough yet lightweight aluminum construction and powder coat finish
- Hoistaloy hardened steel load chain for strength, long wear life and flexibility
- Free chaining for fast, easy attachment to load
- Forged upper and lower hooks with latches
- Simple construction with fewer parts for ease of maintenance
- Optional Load Limiter device protects against overload
- Lifetime warranty
- Made in U.S.A.



Specifications - Short handle puller

Rated capacity* (tons)	Product code	Standard lift (ft.)	Pull to lift full loads (lbs.)	Minimum distance between hooks (in.)	Lever length (in.)	Reeving	Hook throat openings (in.)	Approx. shipping weight (lbs.)
3/4	7300P	5	45	12 1/4	12	1	1 1/32	16
1 1/2	7320P	5	55	14 3/4	16 3/4	1	1 1/8	27
3	7330P	5	62	17 5/8	16 3/4	2	1 3/16	40

Specifications - Short handle puller without chain

Rated capacity* (tons)	Product code	Approx. shipping weight (lbs.)
3/4	7301P	12
1 1/2	7321P	21
3	7331P	28



Optional Load Limiter



Optional upper Latchlok Hook
3/4 – 1 1/2 ton



Optional anchor sling

Optional kits

	Product code	Approx. shipping weight (lbs.)	Rated capacity* (tons)
Load Limiter	7310P	1	3/4
	7311P	2	1 1/2-3
Anchor Sling	7309P	2	3/4
	7312P	3	1 1/2
Latchlok Hook	1001	2	3/4
	upper 1003	2	1 1/2
	1004	3	3
	lower 1001	2	3/4
	1003	2	1 1/2
	1005	3	3



Optional upper Latchlok Hook
3 ton

CM Puller

The CM Puller is designed for heavy-duty construction and industrial applications. Used to pull, lift, drag or stretch, it features:

- Tough aluminum alloy construction and powder coat finish
- Weatherproof for outdoor service
- Simple construction with fewer parts for ease of maintenance and lower inventories
- Hoist alloy hardened steel link type load chain for strength, long wear life and flexibility
- Weatherized Weston-type automatic braking system for positive load control
- Easy, one-hand operation and control — only 58 pounds of pull required for ¾ ton model capacity
- Forged upper and lower hooks with latches standard
- Free wheeling for fast and easy attachment to load
- Upper and lower Latchlok hooks available for all capacities
- Optional Load Limiter protection device stops transmission of lever forces protecting against dangerous overload
- Optional anchor sling simplifies attachment to allow anchor hook to swivel in tight space applications (¾ & 1½ ton units only)
- Optional Load Sentry warns of overload condition
- Optional shorter lever for ¾ and 1½ ton units available
- Optional zinc-plated chain available
- Unlimited lift
- Lifetime warranty
- Metric rated
- Made in U.S.A.



Optional shorter lever



¾ ton

Optional Load Sentry



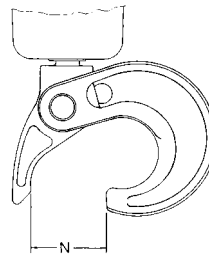
Optional Load Limiter



1½ ton

3 ton

6 ton

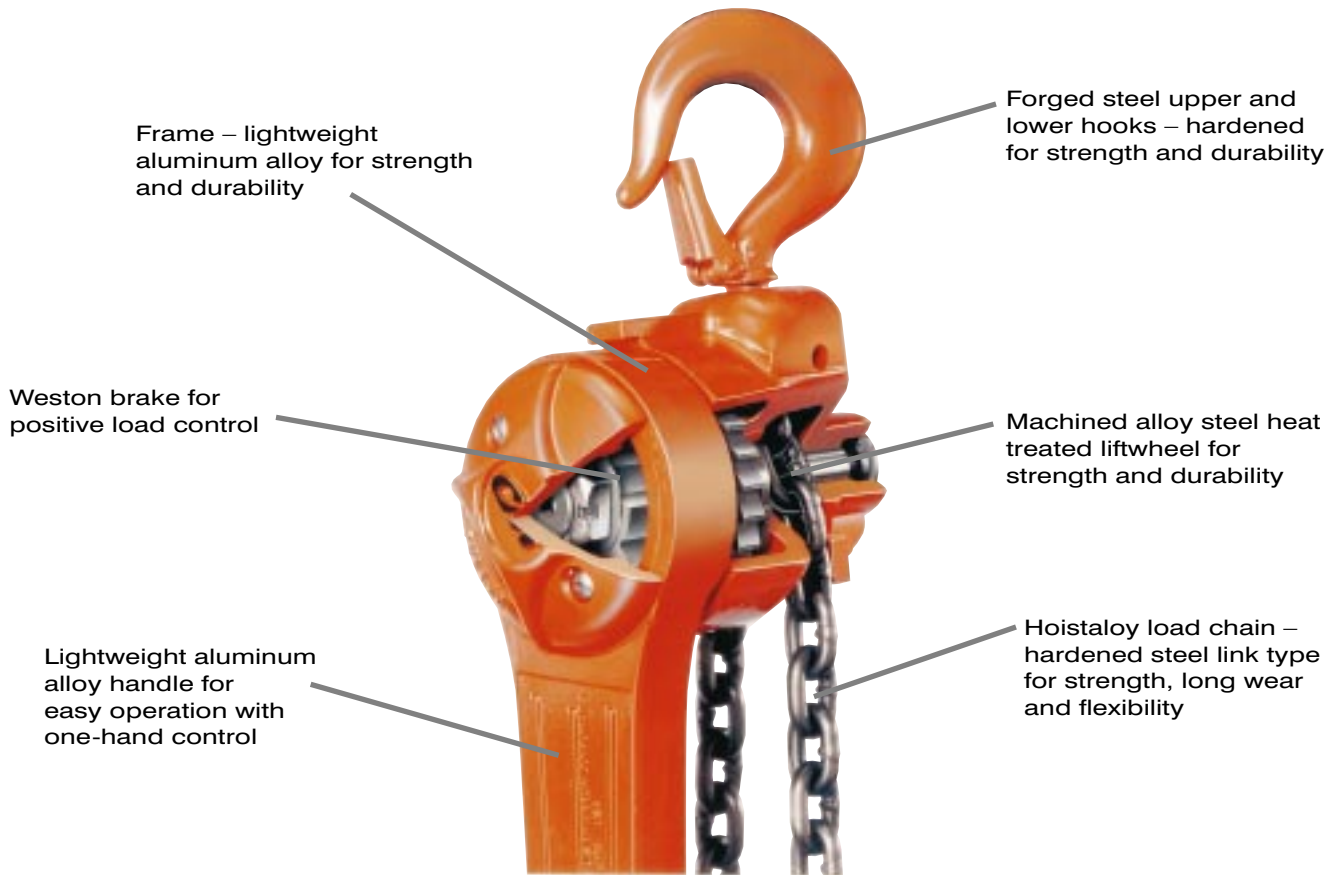


Latchlok type hook



Optional anchor sling (¾ and 1½ ton)

* ⚠ WARNING
Overloading and improper use can result in injury.
<p>To avoid injury:</p> <ul style="list-style-type: none"> • Do not exceed working load limit, load rating or capacity. • Do not use to lift people or loads over people. • Use only alloy chain for overhead lifting. • Read and follow all instructions.



Puller specifications - standard unit

Rated capacity* (tons)	Product code	Standard lift† (ft.)	Pull to lift full loads (lbs.)	Minimum distance between hooks (in.)	Lever length (in.)	Reeving	Hook throat openings (in.)	Approx. shipping weight (lbs.)
3/4	4043	5	58	10 ³ / ₄	21 ¹ / ₄	1	1 ¹ / ₃₂	16
1 1/2	4045	5	89	14 ¹ / ₄	21 ¹ / ₄	1	1 ¹ / ₈	26
3	4047	5	95	16 ¹⁵ / ₁₆	21 ¹ / ₄	2	1 ⁷ / ₃₂	38
6	4050	5	96	21 ³ / ₈	21 ¹ / ₄	4	1 ³ / ₄	73

† Can be supplied with lifts longer than 5 feet

Optional kits

Rated capacity* (tons)	Load Limiter		Load Sentry kit			Anchor sling kit	
	Product code	Approx. shipping weight (lbs.)	Product code	Lever length (in.)	Approx. shipping weight (lbs.)	Product code	Approx. shipping weight (lbs.)
3/4	4190	8 ¹ / ₄	4096	23 ³ / ₄	4 ¹ / ₂	4071	2
1 1/2	4191	8 ¹ / ₄	4098	23 ³ / ₄	4 ¹ / ₂	4072	4 ³ / ₄
3	4191	8 ¹ / ₄	4098	23 ³ / ₄	4 ¹ / ₂	—	—
6	4191	8 ¹ / ₄	4098	23 ³ / ₄	4 ¹ / ₂	—	—

*** ⚠ WARNING**

Overloading and improper use can result in injury.

To avoid injury:

- Do not exceed working load limit, load rating or capacity.
- Do not use to lift people or loads over people.
- Use only alloy chain for overhead lifting.
- Read and follow all instructions.

Rigger lever operated hoist

Designed for moderate commercial applications, this lightweight, compact tool stores easily and features:

- Flexible, non-binding CM load chain
- Forged upper and lower hooks with latches standard
- Free-wheeling chain for fast attachment
- Clover leaf chain guides and stripper seat chain in liftwheel reduce chance of jamming

- Unlimited lift by ordering any length chain
- Ratchet, driving pawl and holding pawl for load control
- One lever used to change from lifting to lowering and back to lifting
- Easy maintenance
- One-year warranty
- Metric rated
- Made in U.S.A.



Specifications

Rated capacity* (tons)	Product code	Standard lift† (ft.)	Reeving	Pull to lift full load (lbs.)	Minimum distance between hooks (in.)	Lever length (in.)	Hook throat openings (in.)	Shipping weight (lbs.)
3/4	2301	5	1	98	10 3/4	15 3/8	1 1/32	8 3/4
1 1/2	2302	5	2	98	12 1/2	15 3/8	1 1/32	13 3/4

† Can be supplied with lifts longer than 5 feet

CM Series 637 lever operated hoist

Designed for close quarters, standard duty commercial applications, this rugged, compact tool has a short stroke with minimal effort required. Also features:

- Weston-type automatic braking system for positive load control
- Forged upper and lower hooks with latches standard
- Steel chain guide roller and chain stripper for smooth chain feed

- Double reduction dual load sharing steel gears
- Double pawl arrangement for optimum load control
- Impact resistant all steel frame, gear case and cover
- Minimal maintenance with no special tools
- Hardened link type steel load chain for strength and long wear life
- Free-wheeling chain for fast load attachment
- One-year warranty
- Metric rated
- Imported



Specifications

Rated capacity* (tons)	Product code	Standard lift† (ft.)	Reeving	Pull to lift full load (lbs.)	Lever length (in.)	Hook throat opening (in.)	Minimum distance between hooks (in.)	Shipping weight (lbs.)
3/4	3703	5	1	45	11 1/2	15 1/16	11 1/2	17 3/4
3/4	3743	10	1	45	11 1/2	15 1/16	11 1/2	21 3/4
3/4	3757	15	1	45	11 1/2	15 1/16	11 1/2	20
3/4	3758	20	1	45	11 1/2	15 1/16	11 1/2	22
1 1/2	3705	5	1	48 1/2	16 1/4	1 1/16	13 5/8	28
1 1/2	3745	10	1	48 1/2	16 1/4	1 1/16	13 5/8	33
1 1/2	3746	15	1	48 1/2	16 1/4	1 1/16	13 5/8	39
1 1/2	3759	20	1	48 1/2	16 1/4	1 1/16	13 5/8	45
3	3707	5	1	73	16 3/16	1 1/2	19 1/8	47 1/4
3	3747	10	1	73	16 3/16	1 1/2	19 1/8	54 1/4

† Can be supplied with lifts longer than 20 feet

1 CM wire rope puller

This manual lever operated hoist can be used to lift or pull 1/2 to 1 ton loads. Both models feature:

- Fully portable, lightweight, compact design
- Rugged one-piece cast aluminum drum and double ratchet design for extremely long life; laminations won't corrode or separate
- Shielded drum to protect cable from incidental damage and maintain proper wrap on drum
- Double ratcheting pawls to keep handle force centered on load and prevent tendency for hoist to twist or rotate
- Upper swivel latch type hook rotates 360° and articulates 180° to provide easier connection to suspension point or load
- Corrosion-resistant zinc-plated finish
- High-strength corrosion-resistant galvanized aircraft cable
- Oversized hooks to provide larger throat opening for easier attachment
- Usable in any position, even upside down, allowing easy rigging in tight applications
- Patented operating mechanism to allow one-finger operation
- Heavy-duty steel frame and easy-to-use handle with permanently fixed non-slip thermally insulated grip handle
- One-piece cast steel pawl for increased durability and strength
- Free wheeling in unloaded state for easy attachment of load
- One-year warranty
- Metric rated
- Made in U.S.A.



Specifications

Rated capacity* (tons)	Product code	Maximum lift (ft.)	Wire rope cable diameter (in.)	Handle length (in.)	Handle pull at grip to lift rated load (lbs.)	Minimum headroom (in.)	Hook throat openings (in.)	Approx. shipping weight (lbs.)
1/2	15902	12	3/16	20	100	16	3/4	10
1	15904	6	3/16	20	105	18.5	3/4	9

* ⚠ WARNING

Overloading and improper use can result in injury.

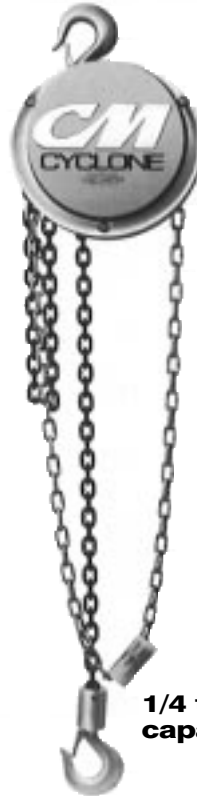
To avoid injury:

- Do not exceed working load limit, load rating or capacity.
- Do not use to lift people or loads over people.
- Use only alloy chain for overhead lifting.
- Read and follow all instructions.

Cyclone hand chain hoist

One of the most popular and reliable hoists ever designed, the Cyclone combines superior engineering, efficiency and durability. Available in a variety of capacities from 1/4 ton to 10 tons, Cyclone features:

- Most interchangeability of parts in the industry
- Standard Load Limiter for simple, automatic overload protection
- Enclosed contoured Weston-type automatic brake for positive load control
- High-efficiency spur gearing for greater lift with minimum effort
- Rugged Hoistaloy chain for added strength and durability
- Fully machined, forged liftwheel pockets for easier lifting and smooth free chaining
- High-strength aluminum alloy castings in frame and covers
- Inspected over 75 times to meet or exceed HMI and ASME/ANSI performance and safety standards
- Standard hand chain drop is 2 feet less than lift, (example: 8 foot lift hoist has 6 foot hand chain drop)
- Chain containers, zinc-plated load and hand chain, aluminum unwelded hand chain, Latchlok hooks, bronze hooks, eye-type suspension, bullard hooks and units without Load Limiter optional, depending on capacity
- Lifetime warranty
- Metric rated
- Made in U.S.A.



1/4 to 2 ton capacity



3 and 4 ton capacity



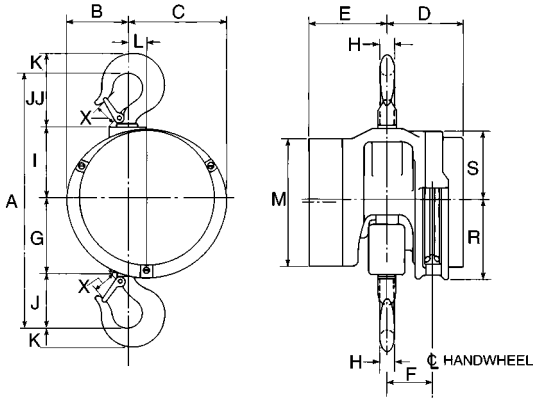
5 and 6 ton capacity



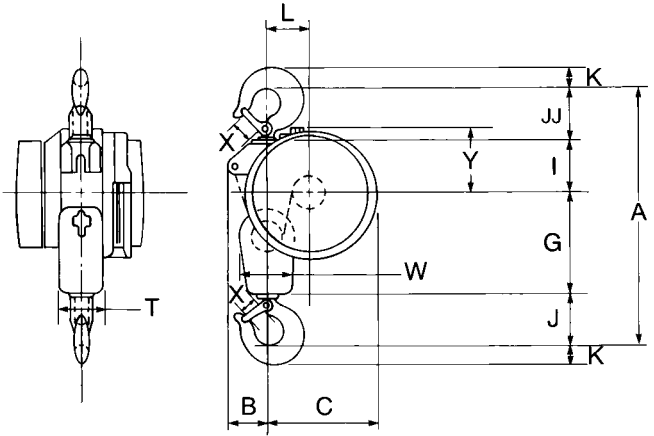
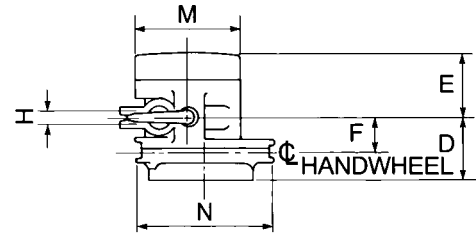
8 ton capacity



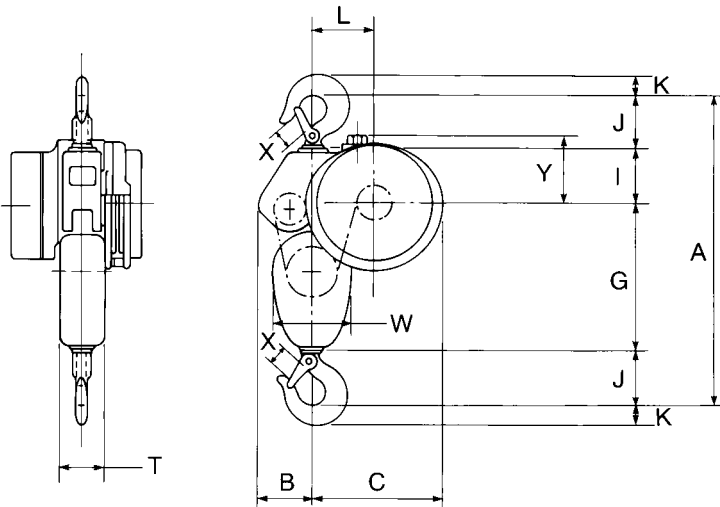
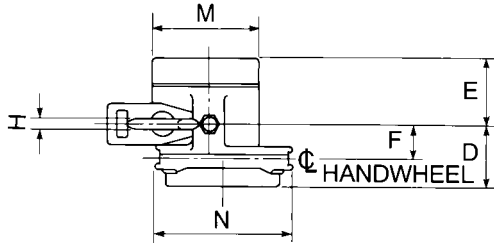
10 ton capacity



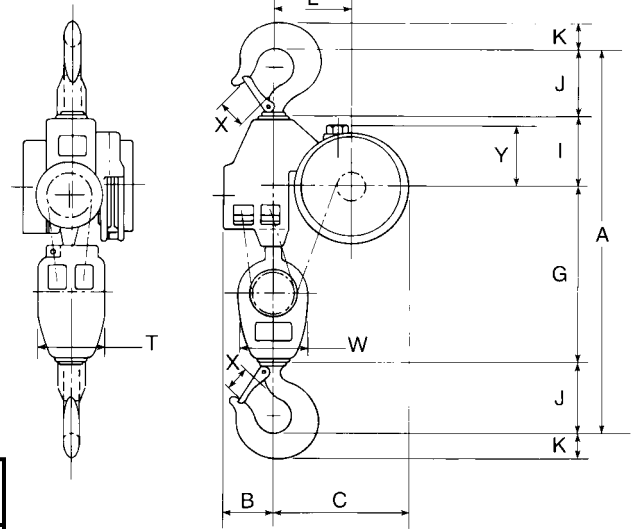
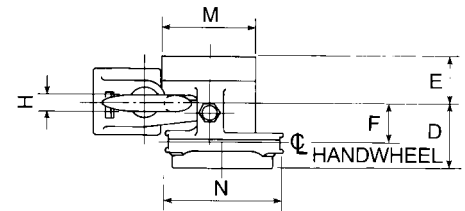
1/4 - 2 ton



3 - 4 ton



5 - 6 ton



8 - 10 ton

*** ⚠ WARNING**

Overloading and improper use can result in injury.

To avoid injury:

- Do not exceed working load limit, load rating or capacity.
- Do not use to lift people or loads over people.
- Use only alloy chain for overhead lifting.
- Read and follow all instructions.

Specifications

Rated capacity* (tons)	Product code	Standard lift† (ft.)	Reeving	Minimum distance between hooks (in.)	Chain overhauled to lift load one foot (ft.)	Chain pull to lift full load (lbs.)	Shipping weight (lbs.)
1/4	4621	8	1	12 ⁷ / ₈	22 ¹ / ₂	23	37
1/2	4622	8	1	12 ⁷ / ₈	22 ¹ / ₂	46	37
1	4624	8	1	14	30	69	40
1 1/2	4625	8	1	17 ⁵ / ₁₆	40 ¹ / ₂	80	65
2	4626	8	1	17 ⁵ / ₁₆	52	83	64
3	4627	8	2	21 ¹ / ₂	81	85	96
4	4628	8	2	21 ¹ / ₂	104	88	96
5	4629	8	3	24 ¹ / ₄	156	75	128
6	4630	8	3	25 ¹ / ₄	156	90	132
8	4631	8	4	34 ¹ / ₂	208	89	235
10	4632	8	5	35 ¹ / ₂	260	95	249

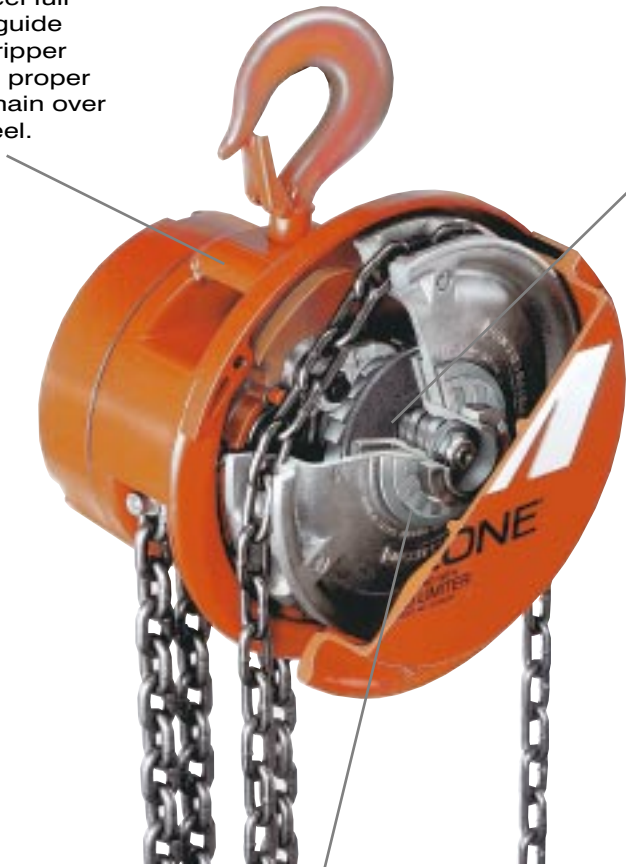
† Can be supplied with longer lifts

Clearance dimensions (in.)

Dimension	Rated capacity* (tons)								
	1/4	1/2	1	1 1/2 & 2	3 & 4	5	6	8	10
A	12 ⁷ / ₈	12 ⁷ / ₈	14	17 ⁵ / ₁₆	21 ¹ / ₂	24 ¹ / ₄	25 ¹ / ₄	34 ¹ / ₂	35 ¹ / ₂
B	3 ¹¹ / ₁₆	3 ¹¹ / ₁₆	3 ¹¹ / ₁₆	4 ³ / ₁₆	3 ⁵ / ₁₆	4 ³ / ₁₆	4 ³ / ₁₆	4 ³ / ₄	4 ³ / ₄
C	7 ³ / ₁₆	7 ³ / ₁₆	7 ³ / ₁₆	6 ¹¹ / ₁₆	8 ¹⁵ / ₁₆	10 ⁵ / ₁₆	10 ⁵ / ₁₆	12 ³ / ₄	12 ³ / ₄
D	4 ¹ / ₈	4 ¹ / ₈	4 ¹ / ₈	5 ¹ / ₁₆	5 ¹ / ₁₆	4 ⁷ / ₈	4 ⁷ / ₈	5 ¹³ / ₁₆	5 ¹³ / ₁₆
E	3 ¹ / ₄	3 ¹ / ₄	3 ¹ / ₄	4 ¹³ / ₁₆	4 ¹³ / ₁₆	5	5	4 ¹ / ₁₆	4 ¹ / ₁₆
F	2 ¹ / ₁₆	2 ¹ / ₁₆	2 ¹ / ₁₆	3 ¹ / ₈	3	2 ¹⁵ / ₁₆	2 ¹⁵ / ₁₆	3 ³ / ₄	3 ³ / ₄
G	3 ⁷ / ₈	3 ⁷ / ₈	3 ³ / ₄	5 ³ / ₁₆	8 ¹ / ₄	11 ¹³ / ₁₆	11 ¹³ / ₁₆	17 ³ / ₁₆	17 ³ / ₁₆
H	1 ¹ / ₁₆	1 ¹ / ₁₆	1 ³ / ₁₆	1 ¹ / ₈	1 ¹ / ₄	1 ¹ / ₄	1 ³ / ₈	1 ¹¹ / ₁₆	1 ¹³ / ₁₆
I	3 ³ / ₄	3 ³ / ₄	3 ³ / ₄	4 ¹³ / ₁₆	4 ¹ / ₄	4 ³ / ₁₆	4 ³ / ₁₆	6 ¹ / ₁₆	6 ¹ / ₁₆
J	2 ⁵ / ₈	2 ⁵ / ₈	2 ¹⁵ / ₁₆	3 ⁵ / ₈	4 ¹ / ₈	4 ¹ / ₈	4 ⁵ / ₈	5 ⁵ / ₈	6 ¹ / ₈
JJ	2 ⁵ / ₈	2 ⁵ / ₈	3 ⁹ / ₁₆	3 ¹¹ / ₁₆	4 ⁷ / ₈	—	—	—	—
K	1 ⁵ / ₁₆	1 ⁵ / ₁₆	1 ¹ / ₈	1 ¹ / ₂	1 ¹¹ / ₁₆	1 ¹¹ / ₁₆	1 ⁷ / ₈	2 ¹ / ₄	2 ⁹ / ₁₆
L	1 ³ / ₄	1 ³ / ₄	1 ³ / ₄	1 ¹ / ₄	3 ¹ / ₂	4 ⁷ / ₈	4 ⁷ / ₈	7 ⁵ / ₁₆	7 ⁵ / ₁₆
M	7 ¹ / ₁₆	7 ¹ / ₁₆	7 ¹ / ₁₆	8 ⁵ / ₈	8 ⁵ / ₈	8 ⁵ / ₈	8 ⁵ / ₈	8 ⁵ / ₈	8 ⁵ / ₈
N	—	—	—	—	10 ⁷ / ₈	10 ⁷ / ₈	10 ⁷ / ₈	10 ⁷ / ₈	10 ⁷ / ₈
R	5 ⁷ / ₁₆	5 ⁷ / ₁₆	5 ⁷ / ₁₆	5 ⁷ / ₁₆	—	—	—	—	—
S	4 ¹¹ / ₁₆	4 ¹¹ / ₁₆	4 ¹¹ / ₁₆	4 ¹¹ / ₁₆	—	—	—	—	—
T	—	—	—	—	3 ⁷ / ₈	4	4	6 ³ / ₈	6 ³ / ₈
W	—	—	—	—	4 ¹ / ₂	6 ¹ / ₄	6 ¹ / ₄	6 ⁷ / ₁₆	6 ⁷ / ₁₆
X	1 ¹ / ₃₂	1 ¹ / ₃₂	1 ¹ / ₈	1 ⁵ / ₁₆	1 ⁵ / ₈	1 ⁵ / ₈	1 ³ / ₄	2 ¹ / ₁₆	2 ⁵ / ₁₆
Y	—	—	—	—	5 ¹ / ₈	5 ⁷ / ₈	5 ⁷ / ₈	5 ⁹ / ₁₆	5 ⁹ / ₁₆

1

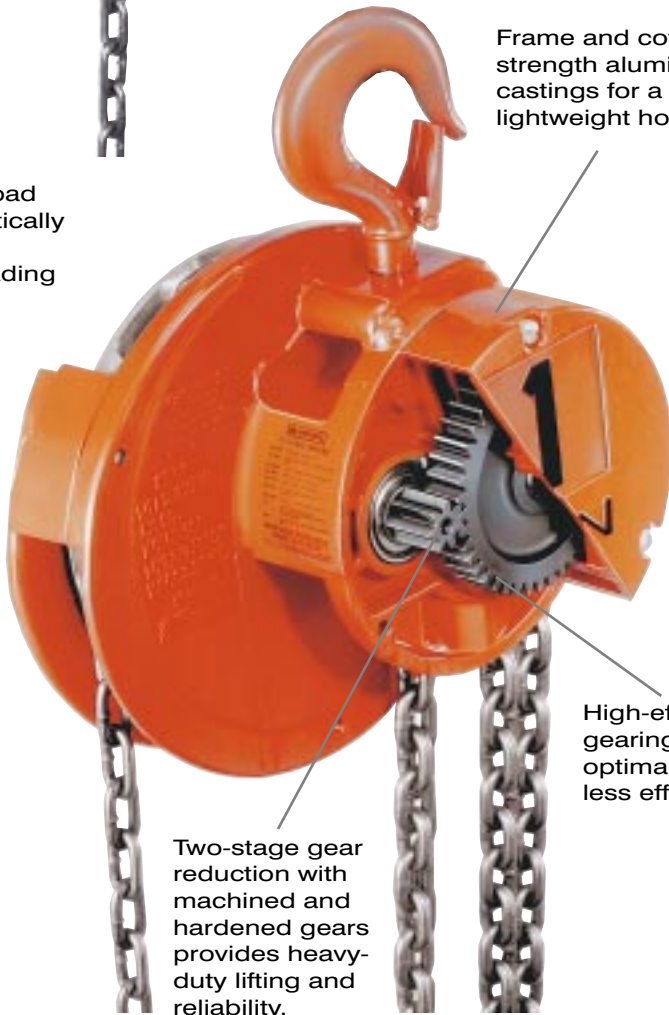
Liftwheel full chain guide and stripper assure proper fit of chain over lift wheel.



Fully enclosed Weston-type load brake provides positive load control consistently.

Load Limiter overload protection automatically protects against dangerous overloading situations.

Frame and covers are high-strength aluminum alloy castings for a durable, lightweight hoist.



High-efficiency spur gearing delivers optimal hoist lift with less effort.

Two-stage gear reduction with machined and hardened gears provides heavy-duty lifting and reliability.



Thrust bearing in lower hook offers ease of rotation.

Cyclone Army type trolley hoist

Same quality and performance as the Cyclone in a compact, low headroom integral trolley mount. Ideal for applications requiring a moveable hoist including:

- Rugged steel loadbars connected directly to hoist frame
- Reduced headroom, side clearances and end approach for easy maneuvering of heavy loads in tight places
- Standard Load Limiter automatic overload protection
- Plain and geared trolley mounts in capacities from 1/4 to 12 tons
- Universal tread trolley wheels for operation on sloped or flat flanged beams
- Standard hand chain drop 2 feet less than lift (example: 8 foot lift hoist has 6 foot hand chain drop)
- Chain containers, zinc-plated load and hand chain, aluminum unwelded hand chain, Latchlok hooks, bronze hooks, bullard hooks, larger beam trolleys, trolley guards, and units without Load Limiter optional, depending on capacity
- Lifetime warranty
- Metric rated
- Made in U.S.A.



Specifications

Rated capacity* (tons)	Product code		Standard lift (ft.)	Reeving	American standard depth (in.)†	Beam adjustment ranges flange width (in.)†	Chain pull to lift capacity loads (lbs.)	Chain overhauled to lift load one foot (ft.)	Min. headroom (in.)	Min. radius curve (in.)	Shipping weight (lbs.)	
	Plain trolley	Geared trolley									Plain trolley	Geared trolley
1/4	4521	4541	8	1	4-12**	2 5/8-5 1/2	23	22 1/2	11 3/4	30	66	108
1/2	4522	4542	8	1	4-12**	2 5/8-5 1/2	46	22 1/2	11 3/4	30	66	108
1	4524	4544	8	1	4-12**	2 5/8-5 1/2	69	30	11 3/4	30	78	130
1 1/2	4525	4545	8	1	6-15	3 3/8-5 5/8	80	40 1/2	15 5/16	30	136	164
2	4526	4546	8	1	6-15	3 3/8-5 5/8	83	52	15 5/16	30	136	164
3	4527	4547	8	2	7-15	3 5/8-5 5/8	85	81	8 7/8	48	182	230
4	4528	4548	8	2	7-15	3 5/8-5 5/8	87	104	18 7/8	48	182	230
5	4529	4549	8	3	8-18	4-6 1/4	74	156	23 1/2	60	268	300
6	4530	4550	8	3	8-18	4-6 1/4	89	156	24	60	273	305
8	4531	4551	8	4	12-24	5-8	91	208	28 1/4	72	506	589
10	4532	4552	8	5	12-24	5-8	93	260	28 1/4	72	513	596
12	4533	4553	8	6	15-24	5 1/2-8	95	312	30 3/8	96	1050	1130

** For 1/4 through 1 ton geared trolleys - minimum beam size S6 x 12.5 (3 3/8 flange width)

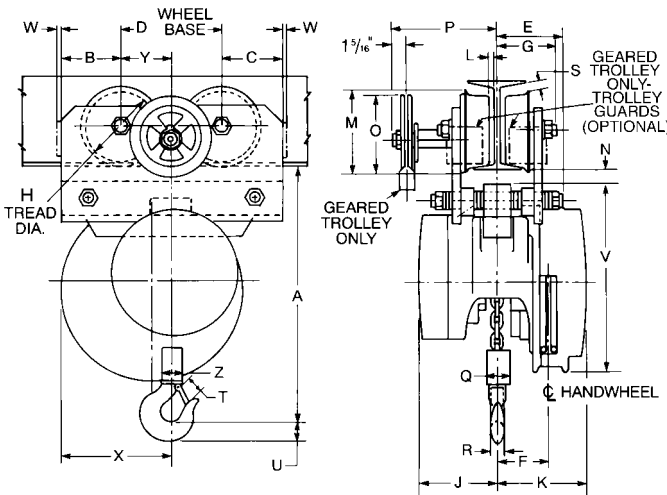
† Universal tread track wheels designed to operate on either sloped or flat flange beam, rails or tracks

*** ⚠ WARNING**

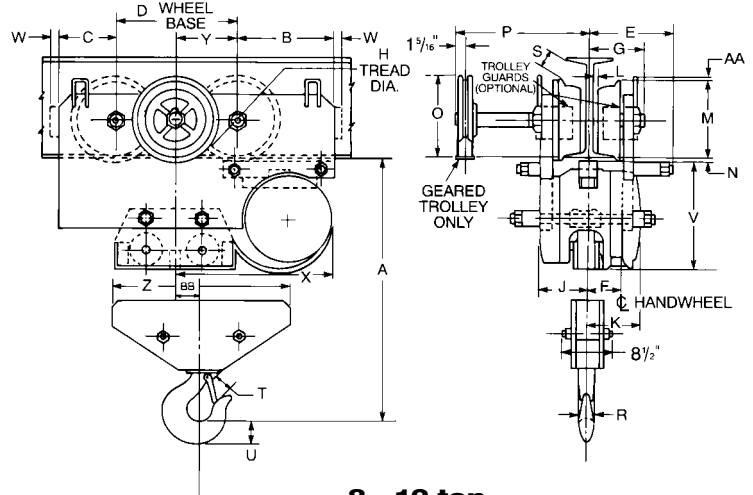
Overloading and improper use can result in injury.

To avoid injury:

- Do not exceed working load limit, load rating or capacity.
- Do not use to lift people or loads over people.
- Use only alloy chain for overhead lifting.
- Read and follow all instructions.



1/4 - 6 ton



8 - 12 ton

Clearance dimensions (in.)

Rated capacity* (tons)

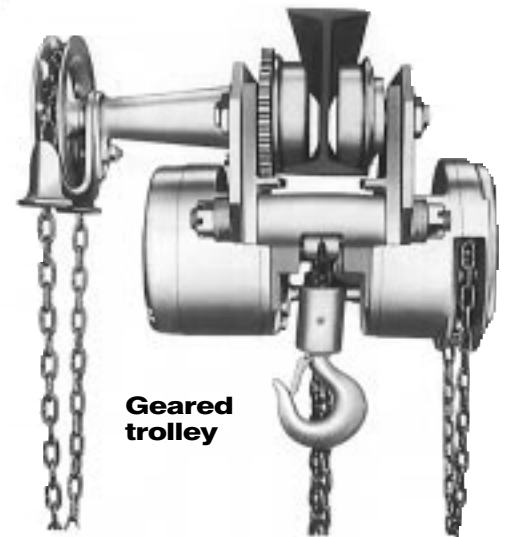
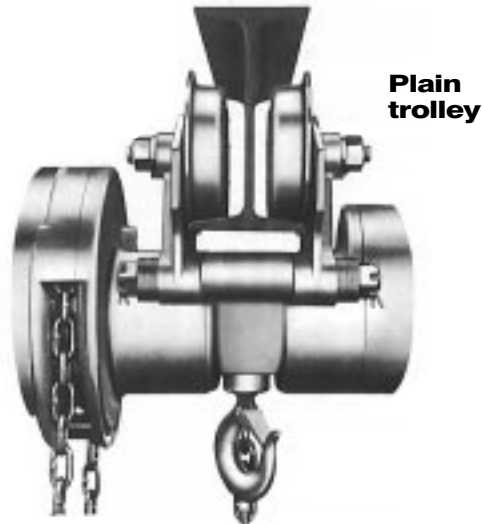
Dimension	1/4, 1/2 & 1		1 1/2 & 2		3 & 4		5		6		8		10		12	
	Plain	Geared	Plain	Geared	Plain	Geared	Plain	Geared	Plain	Geared	Plain	Geared	Plain	Geared	Plain	Geared
A	11 3/4	11 13/16	15 5/16	15 5/16	18 7/8	18 7/8	23 1/2	23 1/2	24	24	28 1/4	28 1/4	28 1/4	28 1/4	30 3/8	30 3/8
B	4 3/16	4 3/8	3 1/16	3 1/16	5 3/4	5 3/4	6 1/2	6 1/2	6 1/2	6 1/2	8 15/16	8 15/16	8 15/16	8 15/16	10 7/8	10 7/8
C	2 9/16	2 9/16	3 1/16	3 1/16	3 7/16	3 7/16	3 3/4	3 3/4	3 3/4	3 3/4	5 1/4	5 1/4	5 1/4	5 1/4	7 9/16	7 9/16
D	6	6	6	6	6 7/8	6 7/8	7 3/4	7 3/4	7 3/4	7 3/4	11	11	11	11	11	11
E	4 1/2	4 15/16	5	5	5 7/16	5 7/16	6 1/8	6 1/8	6 1/8	6 1/8	7 1/4	7 1/4	7 1/4	7 1/4	7 1/4	7 1/4
F	2 1/16	2 1/16	3 1/8	3 1/8	3	3	2 13/16	2 13/16	2 13/16	2 13/16	3	3	3	3	3	3
G	3	3 3/4	3 5/8	3 3/4	4 5/16	4 5/16	4 15/16	4 15/16	4 15/16	4 15/16	5 9/16	5 9/16	5 9/16	5 9/16	5 13/16	5 13/16
H	3 1/8	4	4 3/4	4	5	5	6	6	6	6	8	8	8	8	8	8
J	3 1/4	3 1/4	4 13/16	4 13/16	4 13/16	4 13/16	5	5	5	5	4 13/16	4 13/16	4 13/16	4 13/16	4 13/16	4 13/16
K	4 1/8	4 1/8	5 1/16	5 1/16	5 1/16	5 1/16	4 7/8	4 7/8	4 7/8	4 7/8	5 1/16	5 1/16	5 1/16	5 1/16	5 1/16	5 1/16
L	5/16	5/16	1/2	5/16	1/4	1/4	3/8	3/8	3/8	3/8	1/2	1/2	1/2	1/2	1 1/16	1 1/16
M	4	4 3/4	5 9/16	4 3/4	5 7/8	5 7/8	7	7	7	7	9 7/16	9 7/16	9 7/16	9 7/16	9 1/2	9 1/2
N	1/2	9/16	9/16	9/16	1 1/16	1 1/16	1 1/16	1 1/16	1 1/16	1 1/16	1/2	1/2	1/2	1/2	7/16	7/16
O	-	5 9/16	-	5 9/16	6 1/8	6 1/8	6 3/4	6 3/4	6 3/4	6 3/4	7 9/16	7 9/16	7 9/16	7 9/16	7 9/16	7 9/16
P	-	10	-	10	8 15/16	8 15/16	10 7/16	10 7/16	10 7/16	10 7/16	11 7/16	11 7/16	11 7/16	11 7/16	11 1 1/16	11 1 1/16
Q	2	2	2 1/2	2 1/2	3 3/8	3 3/8	4	4	4	4	11 15/16	11 15/16	-	-	-	-
R	1 1/16	1 1/16	1 1/8	1 1/8	1 1/4	1 1/4	1 1/4	1 1/4	1 3/8	1 3/8	1 13/16	1 13/16	1 13/16	1 13/16	2 3/8	2 3/8
S	1/16	15/16	3/16	15/16	15/16	15/16	3/4	3/4	3/4	3/4	2 3/16	2 3/16	2 3/16	2 3/16	5 1/16	5 1/16
T	1	1	1 3/8	1 3/8	1 5/8	1 5/8	1 5/8	1 5/8	1 3/4	1 3/4	2 5/16	2 5/16	2 5/16	2 5/16	3	3
U	7/8	7/8	1 1/8	1 1/8	1 1 1/16	1 1 1/16	1 1 1/16	1 1 1/16	1 7/8	1 7/8	2 9/16	2 9/16	2 9/16	2 9/16	3	3
V	10 1/8	10 1/8	11 3/8	11 3/8	11 3/8	11 3/8	11 3/8	1 3/8	11 3/8	11 3/8	11 5/8	11 5/8	11 5/8	11 5/8	11 5/8	11 5/8
W	1/4	3/8	3/8	3/8	1/2	1/2	5/8	5/8	5/8	5/8	5/8	5/8	5/8	5/8	5/8	5/8
X	7 3/16	7 3/16	6 1 1/16	6 1 1/16	8 15/16	8 15/16	10 5/16	10 5/16	10 5/16	10 5/16	14 7/16	14 7/16	14 7/16	14 7/16	16 3/8	16 3/8
Y	3	3	3	3	3 7/16	3 7/16	3 7/8	3 7/8	3 7/8	3 7/8	5 1/2	5 1/2	5 1/2	5 1/2	5 1/2	5 1/2
Z	2	2	2 1/2	2 1/2	4 1/2	4 1/2	6 1/4	6 1/4	6 1/4	6 1/4	13 15/16	13 15/16	18 3/16	18 3/16	21 1 1/16	21 1 1/16
AA	-	-	-	-	-	-	-	-	-	-	3/8	3/8	3/8	3/8	3/8	3/8
BB	-	-	-	-	-	-	-	-	-	-	1 15/16	1 15/16	0	0	0	0

Note: Dimensions are based on minimum beam and may vary with larger beams.

Cyclone low headroom trolley hoist

Cyclone and trolley all in one unit for low headroom applications features:

- Crowned tread and flanged wheels to minimize rolling friction
- Simple, efficient design
- Reduced headroom, side clearances and end approach for easy maneuvering of loads in tight places
- Plain trolley mounts in capacities from 1/2 to 6 tons
- Geared trolley mounts in capacities from 1 1/2 to 6 tons
- Standard hand chain drop 2 feet less than lift (example: 8 foot lift hoist has 6 foot hand chain drop)
- Chain containers, zinc-plated load and hand chain, aluminum unwelded hand chain, Latchlok hooks, bronze hooks, bullard hooks, larger beam trolleys, trolley guards and units without Load Limiter optional, depending on capacity
- Standard Load Limiter/automatic overload protection
- Lifetime warranty
- Metric rated
- Made in U.S.A.



Specifications

Rated capacity* (tons)	Product code		Std. lift (ft.)	Reeving	American standard depth (in.)††	Beam adjustment ranges flange width (in.)††	Chain pull to lift full load (lbs.)	Chain overhauled to lift load one foot (ft.)	Min. headroom (in.)	Min. radius curve (in.)	Shipping weight (lbs.)	
	Plain trolley	Geared trolley									Plain trolley	Geared trolley
1/2	4832	—	8	1	6-12**†	3 3/8-5	46	22 1/2	8 7/8	36	88	—
1	4834	—	8	1	6-12**†	3 3/8-5	69	30	9 1/4	36	93	—
1 1/2	4835	4925	8	1	7-15**†	3 5/8-5 1/2	80	40 1/2	12 1/2	48	186	210
2	4836	4926	8	1	7-15†	3 5/8-5 1/2	83	52	12 1/2	48	186	216
3	4837	4927	8	2	7-15†	3 5/8-5 1/2	85	81	14 1/8	48	203	233
4	4838	4928	8	2	8-24†	4-7	88	104	16 3/4	96	308	372
5	4839	4929	8	3	8-24†	4-7	75	156	18 1/4	96	328	370
6	4840	4930	8	3	8-24†	4-7	90	156	18 3/4	96	333	375

** 1/2 and 1 ton also available for 4" and 5" S-beam, and 1 1/2 and 2 ton for 6" S-beam without extra charge

† Universal tread trackwheels designed to operate on either sloped or flat flange beams, rails, or tracks
Also can be used on flat flange beams within the same range of flange widths, provided beam depth will accommodate wheel diameter (check clearance diagram)

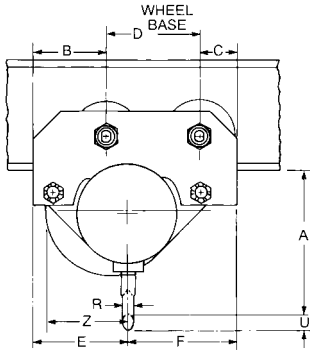
†† Applies to minimum size S-beam within adjustability range

*** ⚠ WARNING**

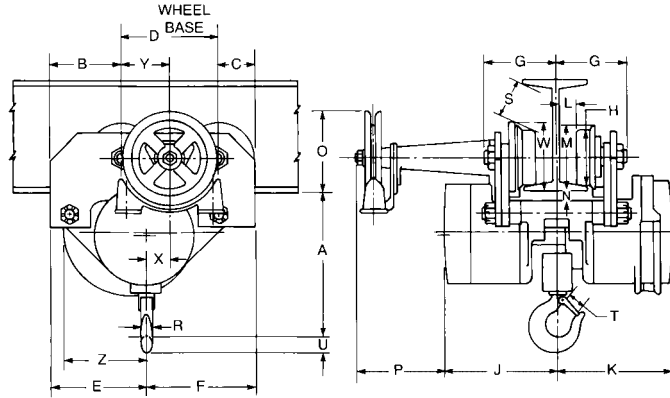
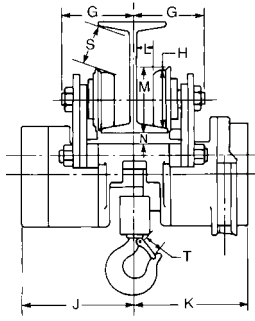
Overloading and improper use can result in injury.

To avoid injury:

- Do not exceed working load limit, load rating or capacity.
- Do not use to lift people or loads over people.
- Use only alloy chain for overhead lifting.
- Read and follow all instructions.



Plain trolley



Geared trolley

Clearance dimensions (in.)

Dimension	Rated capacity* (tons)						
	1/2	1	1 1/2 & 2	3	4	5	6
A	8 7/8	9 1/4	12 1/2	14 1/8	16 3/4	18 1/4	18 3/4
B	3 5/8	3 5/8	6	6	7 3/8	7 3/8	7 3/8
C	3 5/8	3 5/8	3 1/8	3 1/8	4	4	4
D	6 1/2	6 1/2	7 3/4	7 3/4	9	9	9
E	6 7/8	6 3/4	7 5/8	10 1/2	11	11 7/8	11 7/8
F	6 3/4	6 7/8	9 1/4	6 3/8	9 3/8	8 1/2	8 1/2
G	3 3/4	3 3/4	5 1/8	5 1/8	5 7/8	5 7/8	5 7/8
H	4 3/4	4 3/4	4 5/8	4 5/8	5 7/8	5 7/8	5 7/8
J	6	6	9 5/16	9 5/16	10 9/16	10 9/16	10 9/16
K	8 1/8	8 1/8	9 5/8	9 5/8	11	11	11
L	1/2	1/2	1/2	1/2	1/2	1/2	1/2
M	5 7/16	5 7/16	5 3/8	5 3/8	6 3/4	6 3/4	6 3/4
N	1	1	1	1	1 1/8	1 1/8	1 1/8
O	—	—	6 3/4	6 3/4	6 1/2	6 1/2	6 1/2
P	—	—	4 7/8	4 7/8	4 1/4	4 1/4	4 1/4
R	1 1/16	1 3/16	1 1/8	1 1/4	1 1/4	1 1/4	1 3/8
S	5/16	5/16	1 3/8	1 3/8	1 1/16	1 1/16	1 1/16
T	1 1/32	1 1/8	1 5/16	1 5/8	1 5/8	1 5/8	1 3/4
U	1 5/16	1 1/8	1 1/2	1 11/16	1 11/16	1 11/16	1 7/8
W	—	—	5 5/8	5 5/8	7	7	7
X	—	—	2 1/4	5/8	7/8	—	—
Y	—	—	3 7/8	3 7/8	4 1/2	4 1/2	4 1/2
Z	7 3/8	7 1/4	6 5/8	9 1/2	9 1/2	10 3/8	10 3/8

Note: Dimensions G, L, M, O, P, S & W are shown for minimum S-beam and increase proportionally for larger beams. Dimension N is shown for minimum S-beam and decreases proportionally for larger beams.

*** ⚠ WARNING**

Overloading and improper use can result in injury.

To avoid injury:

- Do not exceed working load limit, load rating or capacity.
- Do not use to lift people or loads over people.
- Use only alloy chain for overhead lifting.
- Read and follow all instructions.



Cyclone, Army type and low headroom trolley hoist optional metal chain containers

Product code		Rated capacity* (tons)	Maximum length of lift (ft.)	Bucket length (in.)	Bucket diameter (in.)	Approximate weight (lbs.)
Cyclone and Army type	Low headroom trolley hoist					
4603S-373S	4614S-329S	1/4-1/2	9	8	5	3
4603S-373S	4614S-330S	1/4-1/2	9.1-18	11	5	4
4603S-375S	4614S-331S	1/4-1/2	18.1-27	14	5	4
4603S-376S	4614S-332S	1/4-1/2	27.1-36	17	5	5
4603S-377S	4614S-333S	1/4-1/2	45	20	5	6
4603S-378S	4614S-334S	1/4-1/2	45.1-54	23	5	6
4603S-379S	4614S-335S	1/4-1/2	54.1-78	31	5	8
4603S-380S	4614S-336S	1/4-1/2	78.1-93	36	5	9
4603S-381S	4614S-337S	1/4-1/2	93.1-129	48	5	12
4063S-382S	4614S-339S	1	11	11	5	4
4603S-383S	4614S-340S	1	11.1-18	14	5	4
4603S-384S	4614S-341S	1	18.1-24	17	5	5
4603S-385S	4614S-342S	1	24.1-31	20	5	6
4603S-386S	4614S-343S	1	31.1-37	23	5	6
4603S-387S	4614S-344S	1	37.1-55	31	5	8
4603S-388S	4614S-345S	1	55.1-66	36	5	9
4603S-389S	4614S-346S	1	66.1-92	48	5	12
4603S-352S	4614S-352S	1 1/2-2	9	14	5	4
4603S-353S	4614S-353S	1 1/2-2	9.1-13	17	5	5
4603S-354S	4614S-354S	1 1/2-2	13.1-16	20	5	6
4603S-355S	4614S-355S	1 1/2-2	16.1-20	23	5	6
4603S-356S	4614S-356S	1 1/2-2	20.1-29	31	5	8
4603S-357S	4614S-357S	1 1/2-2	29.1-35	36	5	9
4603S-358S	4614S-358S	1 1/2-2	35.1-49	48	5	12
4603S-394S	—	3-4	8	20	5	6
4603S-360S	4614S-360S	3-4	10	23	5	6
4603S-361S	4614S-361S	3-4	10.1-15	31	5	8
4603S-362S	4614S-362S	3-4	15.1-18	36	5	9
4603S-363S	4614S-363S	3-4	18.1-25	48	5	12
4603S-367S	4614S-367S	5-6	10	31	5	8
4603S-368S	4614S-368S	5-6	10.1-12	36	5	9
4603S-369S	4614S-369S	5-6	12.1-17	48	5	12
4603S-395S	—	8	8	36	5	9
4603S-396S	—	8	8.1-12	48	5	12
4603S-397S	—	10	10	48	5	12



Cyclone, Army type and low headroom trolley hoist optional fabric chain bags

Product code		Rated capacity* (tons)	Maximum length of lift (ft.)	Bag diameter (in.)	Bag length (in.)	Approximate weight (lbs.)
Cyclone and Army type	Low headroom trolley hoist					
2482	2493	1/4-1/2	18	7	7 1/2 x 7 1/2	3
2483	2488	1/4-1/2	18.1-36	10	7 1/2 x 7 1/2	3
2484	2495	1/4-1/2	36.1-54	13	7 1/2 x 7 1/2	3
2485	2496	1/4-1/2	54.1-78	16	7 1/2 x 7 1/2	4
2486	2497	1/4-1/2	78.1-93	18	7 1/2 x 7 1/2	4
2487	2498	1/4-1/2	93.1-129	20	7 1/2 x 7 1/2	4
2482	2493	1	11	7	7 1/2 x 7 1/2	3
2483	2494	1	11.1-24	10	7 1/2 x 7 1/2	3
2484	2495	1	24.1-37	13	7 1/2 x 7 1/2	3
2485	2496	1	37.1-55	16	7 1/2 x 7 1/2	4
2486	2497	1	55.1-66	18	7 1/2 x 7 1/2	4
2487	2498	1	66.1-92	20	7 1/2 x 7 1/2	4
2488	2488	1 1/2-2	13	10	7 1/2 x 7 1/2	3
2489	2489	1 1/2-2	13.1-20	13	7 1/2 x 7 1/2	3
2490	2490	1 1/2-2	20.1-29	16	7 1/2 x 7 1/2	4
2491	2491	1 1/2-2	29.1-35	18	7 1/2 x 7 1/2	4
2492	2492	1 1/2-2	35.1-49	20	7 1/2 x 7 1/2	4
2489	2489	3-4	10	13	7 1/2 x 7 1/2	3
2490	2490	3-4	10.1-15	16	7 1/2 x 7 1/2	4
2491	2491	3-4	15.1-18	18	7 1/2 x 7 1/2	4
2492	2492	3-4	18.1-25	20	7 1/2 x 7 1/2	4
2490	2490	5-6	10	16	7 1/2 x 7 1/2	4
2491	2491	5-6	10.2-12	18	7 1/2 x 7 1/2	4
2492	2492	5-6	12.1-17	20	7 1/2 x 7 1/2	4
2491	2491	8	8	18	7 1/2 x 7 1/2	4
2492	2492	8	8.1-12	20	7 1/2 x 7 1/2	4
2492	2492	10	10	20	7 1/2 x 7 1/2	4

*** ⚠ WARNING**

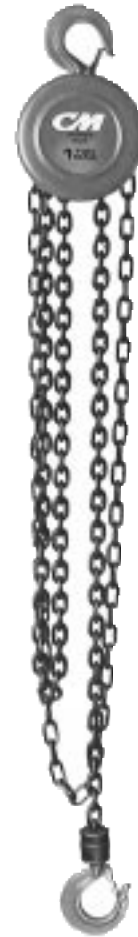
Overloading and improper use can result in injury.

To avoid injury:

- Do not exceed rated load (capacity) or working load limit.
- Do not use to lift people or loads over people.
- Use only alloy chain for overhead lifting.
- Read and follow all instructions.

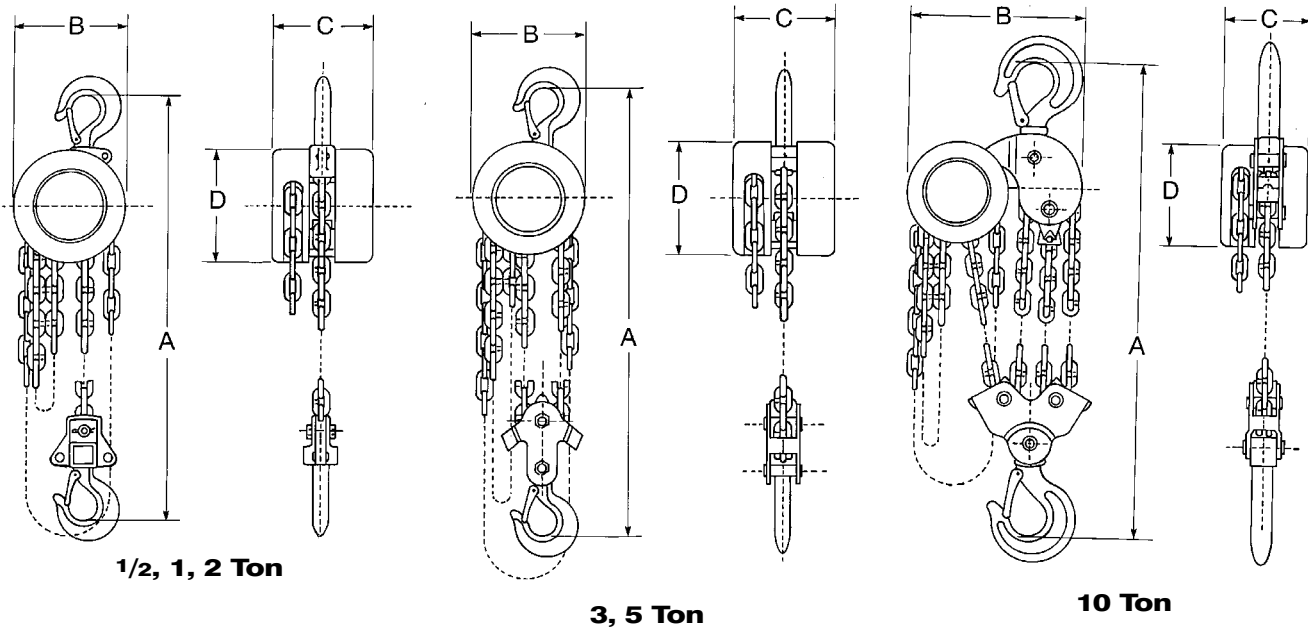
CM Series 622 hand chain hoist

- Simple, efficient, economical design
- Equipped with hardened load chain for flexibility and long wear
- Compact design, low headroom and lightweight steel construction for easy installation, even in confined spaces
- Weston-type load brake requires no lubrication
- Hand wheel cover with guide slots minimizes jamming and slipping
- Forged swivel hooks with latches reduce twisting of chain and unintentional unhooking of load when chain is slack
- Standard hand chain drop is 2 feet less than lift (example: 8 foot lift hoist has 6 foot hand chain drop)
- One-year warranty
- Metric rated
- Imported



Specifications

Product code	Rated capacity* (tons)	Standard lift (ft.)	Chain pull to lift rated load (lbs.)	Hand chain overhauled to lift load one foot (ft.)	Approx. shipping weight (lbs.)
2202	1/2	8	53	29	15
2216	1/2	12	53	29	22
2208	1/2	15	53	29	25
2231	1/2	20	53	29	30
2263	1/2	30	53	29	38
2204	1	8	77	37	22
2217	1	12	77	37	29
2210	1	15	77	37	32
2262	1	20	77	37	38
2264	1	30	77	37	48
2206	2	8	82	80	57
2218	2	12	82	80	6
2213	2	15	82	80	71
2233	2	20	82	80	80
2272	2	30	85	80	85
2207	3	8	65	154	85
2230	3	12	65	154	93
2214	3	20	65	154	109
2209	5	8	105	147	82
2215	5	12	105	147	96
2234	5	20	105	147	123
2212	10	8	109	289	164



Clearance dimensions (in.)

Dimension	Rated capacity* (tons)					
	1/2	1	2	3	5	10
A (Headroom)	11 ⁵ / ₈	13	18 ¹ / ₈	21 ²⁹ / ₃₂	23 ⁷ / ₈	27 ⁹ / ₁₆
B (Width)	4 ¹⁵ / ₁₆	5 ¹⁹ / ₃₂	8 ⁵ / ₁₆	8 ⁵ / ₁₆	8 ⁵ / ₁₆	14 ³ / ₃₂
C (Depth)	4 ⁵ / ₁₆	5 ¹ / ₁₆	6 ⁵ / ₈	6 ⁵ / ₈	6 ⁵ / ₈	6 ⁵ / ₈
D (Diameter)	4 ¹⁵ / ₁₆	5 ¹⁹ / ₃₂	8 ⁵ / ₁₆	8 ⁵ / ₁₆	8 ⁵ / ₁₆	8 ⁵ / ₁₆
Hook opening (upper)	1 ¹ / ₁₆	1 ¹ / ₃₂	1 ¹ / ₄	5 ¹ / ₁₆	1 ¹³ / ₁₆	2 ¹ / ₂
Hook opening (lower)	1 ¹ / ₁₆	1 ¹ / ₃₂	1 ¹ / ₄	5 ¹ / ₁₆	1 ¹³ / ₁₆	2 ¹ / ₂

*** ⚠ WARNING**

Overloading and improper use can result in injury.

To avoid injury:

- Do not exceed working load limit, load rating or capacity.
- Do not use to lift people or loads over people.
- Use only alloy chain for overhead lifting.
- Read and follow all instructions.

Chain charts for CM hand and lever operated hoists

Rated capacity* (tons)	Product code	Chain size diameter (in.)	Hoist	Std. lift (ft.)	Length chain for standard lift	Reeving	Link outside length nominal (in.)	Link outside width nominal (in.)	Weight per foot (lbs.)	Length hand chain for standard lift
1/4	85839	1/4	Cyclone	8	8'-8"	1	1.245	.853	.59	14'-0"
1/4	85834	.197	Series 622	8	8'-9"	1	.969	.666	.38	14'-0"
1/2	85839	1/4	Cyclone	8	8'-8"	1	1.245	.853	.59	14'-0"
1/2	85834	.197	Series 622	8	8'-9"	1	.969	.666	.38	14'-0"
3/4	85843	3/16	Rigger	5	5'-6"	1	.935	.632	.32	—
3/4	85839	1/4	Puller	5	5'-6"	1	1.245	.853	.59	—
3/4	85839	1/4	S.H. Puller	5	5'-6"	1	1.245	.853	.59	—
3/4	85959	.236	Series 637	5	5'-6"	1	1.162	.784	.508	—
1	85841	9/32	Cyclone	8	8'-10"	1	1.421	.956	.74	14'-0"
1	85959	.236	Series 622	8	8'-9"	1	1.162	.784	.508	14'-0"
1 1/2	85843	3/16	Rigger	5	11'-3"	2	.935	.632	.32	—
1 1/2	85847	5/16	Puller	5	5'-6"	1	1.482	1.03	.88	—
1 1/2	85847	5/16	S.H. Puller	5	5'-6"	1	1.482	1.03	.88	—
1 1/2	85864	3/8	Cyclone	8	9'-0"	1	1.762	1.23	1.35	14'-0"
1 1/2	85961	.281	Series 637	5	6'-0"	1	1.181	.799	.759	—
2	85864	3/8	Cyclone	8	9'-0"	1	1.762	1.23	1.35	14'-0"
2	85960	.394	Series 622	8	9'-0"	1	1.937	1.296	1.452	16'-0"
3	85847	5/16	Puller	5	11'-3"	2	1.482	1.03	.88	—
3	85847	5/16	S.H. Puller	5	11'-3"	2	1.482	1.03	.88	—
3	85864	3/8	Cyclone	8	17'-11"***	2	1.762	1.23	1.35	14'-0"
3	85960	.394	Series 622	8	18'-0"	2	1.937	1.296	1.452	16'-0"
3	85960	.394	Series 637	5	6'-3"	1	1.937	1.296	1.452	—
4	85864	3/8	Cyclone	8	17'-11"***	2	1.762	1.23	1.35	14'-0"
5	85864	3/8	Cyclone	8	26'-10"***	3	1.762	1.23	1.35	14'-0"
5	85960	.394	Series 622	8	18'-0"	2	1.937	1.296	1.452	18'-0"
6	85847	5/16	Puller	5	22'-9"	4	1.482	1.03	.88	—
6	85864	3/8	Cyclone	8	26'-10"***	3	1.762	1.23	1.35	14'-0"
8	85864	3/8	Cyclone	8	37'-4"***	4	1.762	1.23	1.35	16'-0"
10	85864	3/8	Cyclone	8	46'-6"†	5	1.762	1.23	1.35	16'-0"
10	85960	.394	Series 622	8	36'-0"	4	1.937	1.296	1.452	18'-0"

**Must be even number of links

† Must be odd number of links

Note: All codes listed above are for unplated chains.

1 Drum chain for hand operated hoists

Rated capacity* (tons)	Hoist description	Chain size diameter (in.)	Chain product code	Chain drum product code	Chain description	Length per drum (ft.)	Approx. shipping weight (lbs.)
1/4-1/2	Series 622	.197	85834	85005	Load chain	250	90
1	Series 622	.236	85959	85002	Load chain	250	127
1 1/2-10	Series 622	.394	85960	85003	Load chain	200	305
1/4-1/2	Cyclone	1/4	85839	85928	Load chain	250	153
1/4-1/2	Cyclone	1/4	85839	85007	Load chain	500	306
1	Cyclone	9/32	85841	85930	Load chain	200	145
1	Cyclone	9/32	85841	85008	Load chain	500	363
1 1/2-10	Cyclone	3/8	85864	85932	Load chain	200	276
1 1/2-10	Cyclone	3/8	85864	85010	Load chain	500	690
1/4-10	Cyclone	15/64	85808	85927	Hand chain	250	119
1/4-10	Cyclone	15/64	85808	85006	Hand chain	500	238
1/4-10	Series 622	.192	85832	85997	Hand chain	250	83

Drum chain for lever operated hoists

Rated capacity* (tons)	Hoist description	Chain size diameter (in.)	Chain product code	Chain drum product code	Chain description	Length per drum (ft.)	Approx. shipping weight (lbs.)
3/4	Puller	1/4	85839	85928	Load chain	250	153
3/4	Puller	1/4	85839	85007	Load chain	500	306
3/4	S.H. Puller	1/4	85839	85928	Load chain	250	153
3/4	S.H. Puller	1/4	85839	85007	Load chain	500	306
1 1/2-6	Puller	5/16	85847	85931	Load chain	200	183
1 1/2-6	Puller	5/16	85847	85009	Load chain	500	458
1 1/2-3	S.H. Puller	5/16	85847	85931	Load chain	200	183
1 1/2-3	S.H. Puller	5/16	85847	85009	Load chain	500	458
3/4-1 1/2	Rigger	3/16	85843	85924	Load chain	250	80
3/4	Series 637	.236	85959	85002	Load chain	250	143
1 1/2	Series 637	.281	85961	85004	Load chain	250	190
3	Series 637	.394	85960	85003	Load chain	200	290

Note: All chain drums listed above have unplated chain.

Each size chain is packed in one continuous length in a specially designed reinforced fiber drum.

Instructions for cutting Hoistaloy and chain are included in each chain drum.

When installing load chain, be sure the load supporting end is on the correct side of the liftwheel. Also, the welded side of the upstanding link should be away from the liftwheel.

Standard lengths of load chain (except for the Series 637 lever tool and Series 622 hand hoist) may be returned to CM for credit provided they are in good condition and distributor prepays the return transportation. Short lengths or odd pieces *may not be returned; standard lengths only.*

Contact Inside Sales Department to obtain return authorization.

All load chain returns must go to CM Hoist Division, Columbus McKinnon Corp., 290 Stonemill Rd., Abingdon, VA 24212.

*** ⚠ WARNING**

Overloading and improper use can result in injury.

To avoid injury:

- Do not exceed working load limit, load rating or capacity.
- Do not use to lift people or loads over people.
- Use only alloy chain for overhead lifting.
- Read and follow all instructions.